



Y400 Round Boom Yagi

Set frequency round boom Yagi's

UHF 380-520 MHz

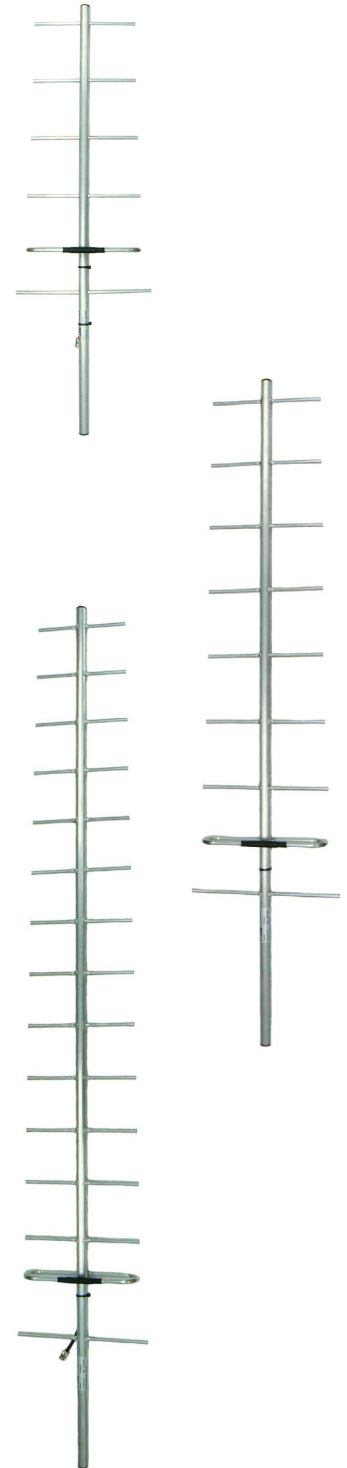


The ZCG Y400 series round boom Yagi's are a cost effective equivalent to ZCG's premium square boom Yagi's. Available in A, B, C, D and E models set to a segment of the UHF range 380-520 MHz.

A round boom Yagi allows for flexible mounting on any plane with the ability to fix into an existing or new bracket.

ZCG's range of round boom Yagi's match or surpass all others on the market. Customisation available, contact ZCG for more information.

	Y406	Y409	Y415
Fixed frequency models select letter when ordering	A-R = 380-400 MHz * B-R = 400-420 MHz C-R = 420-450 MHz * D-R = 450-480 MHz E-R = 480-520 MHz *		
Construction	Fully-welded corrosion resistant round aluminium boom and dipole		
Tuning	Factory		
VSWR	<1.5:1 across fixed bandwidth		
Number of elements	6	9	15
Gain - nominal	9 dBd	11.5 dBd	14 dBd
Polarisation	Mount horizontal or vertical as required		
DC grounding	Yes		
Maximum power	150 Watts		
Impedance	50 Ohms		
H Plane at centre	50°	44°	37°
E Plane at centre	46°	36°	33°
Front-to-back ratio	>15 dB	>17 dB	
Connector and cable	N-type female fitted to 200mm RG59 cable tail		
Boom length	1.2 metres	1.7 metres	2.5 metres
Longest element	400mm		
Weight	0.6kg	0.9kg	1.1kg
Projected area	0.05m ²	0.08m ²	0.110m ²
Wind load at 160kph	6.1kg	8.1kg	12kg
Mounting hardware order separate	1 x RB8, 1 x RB8-L or 1 x A48-R		1 x RB8, 1 x RB8-L or 1 x A48-R + 1 x strut kit






Y400 Round Boom Yagi

Set frequency round boom Yagi's

UHF 380-520 MHz




Suitable mounting hardware




CFB series - Galvanised steel J' hockey stick brackets, 1.1 - 2.1 metres.

Requires A-4266 series + 2 x EB1-SS or 1 x UB2-SS



SFB Series - galvanised steel pole extension 0.9-2.0 metres
Roof or overhang mounting

Requires mounting screws/ bolts and mounting hardware for antenna

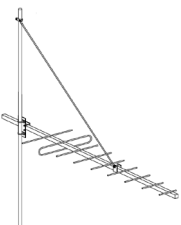


A-2654-2 - Aluminium pole extension 1.1 metres includes pole mounting brackets.

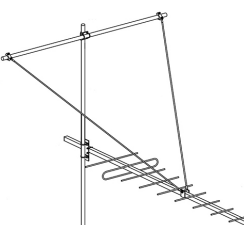
Requires A-4266 + 2 x EB1-SS or 1 x UB2-SS



A48-R galvanised steel Right-angle for 25mm round 30-50mm mount pole



YS1-48
For 9-15 element Yagi's
Single tension strut support
Includes Yagi and mount pole mounting hardware.
Mount pole not supplied



YS2-48
For 9-15 element Yagi's
Dual tension strut support
Includes Yagi clamp, support boom, pole mounting hardware.
Mount pole not supplied

Suitable feeder coaxial cable and connectors



RG240-UF ultra flexible, low loss, stranded core coaxial cable

P/N 7876-2

Available in 300m roll or alternatively request a custom cable assembly



N-type male crimp connector for RU240-UF coaxial cable

P/N 7987

Tri-metal plated



RU400 Solid copper conductor, low loss coaxial cable
Also available in ultra-flexible stranded core cable P/N 7890-2

P/N 7890

Available in 100m, 300m, 500m roll or alternatively request a custom cable assembly



N-type male crimp connector for RU400 low loss, solid conductor

P/N 8226

Tri-metal plated



RU600 Solid copper conductor, low loss coaxial cable

P/N 7890-3

Available in 500m roll or alternatively request a custom cable assembly



N-type male crimp connector for RU600 low loss, solid conductor

P/N 8226-2

Tri-metal plated